
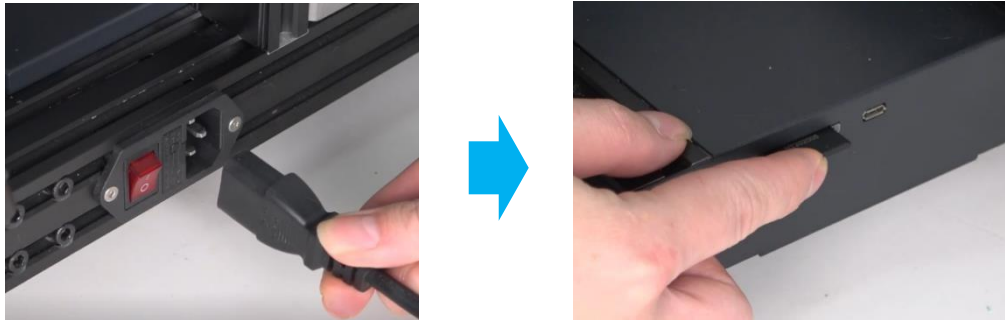


## Upgrade Guide for CR-6 Series Printer

### Mainboard Version: Creality V4.5.2 Update Mainboard firmware:

- 1、Format the SD card on the computer (Recommend 8G SD card)
- 2、Copy the firmware into the SD card, and please note there should be only one bin File ending with. bin 
- 3、Power off the printer, and insert the SD card with bin file into the printer card slot.



- 4、Plug in the power cord and power on, wait about 10 seconds, the firmware will complete updating automatically.

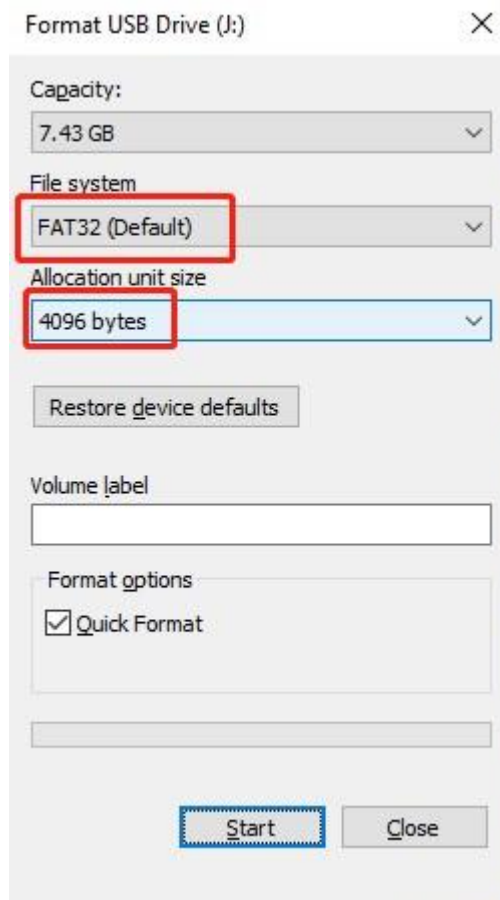


5、Firmware update finished, Please unplug the SD card and delete the firmware file.

## Notes:

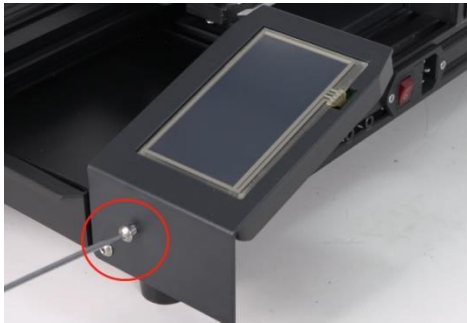
If firmware update failed, it will always stay in process bar interface, on which please operate as following steps.

- 1、Check the firmware name, which can not contain Chinese characters or other special characters, otherwise it will lead the firmware update failed. The firmware name is recommended to contain only English characters and numbers, such as “CR-6SE - V2.0.1.3 - HW - V4.5.2”。
- 2、Right click the U disk, select format, and then format window pop up, select FAT32 under File system and 4096 bytes under allocation unit size, as figure shown below:

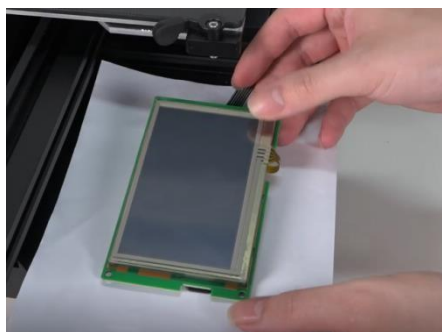


## Update the screen firmware:

- 1、Format the SD card on the computer (Recommend 8G SD card)
- 2、Copy the screen firmware into the TF card, and please note this should be the only file in the TF card, and the printer should have been shut down. File Folder is DWIN\_SET
- 3、Remove the screen and unplug the wiring on the back of the screen.

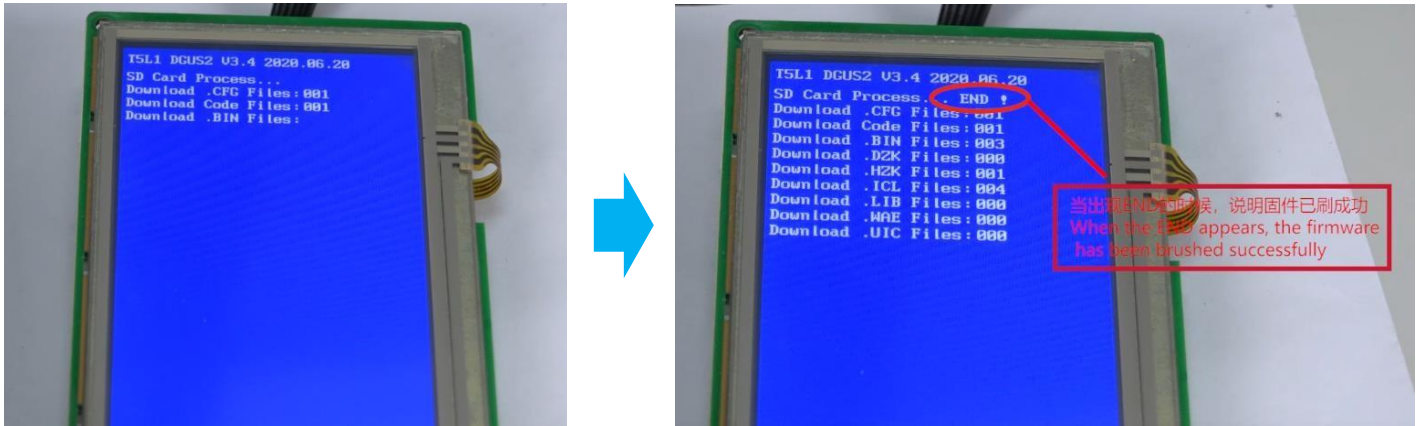


- 4、Then remove the bottom cover of the screen, insert the memory card with firmware into the screen card slot, plug in the screen wiring, and then place the screen in the front (paper or insulating objects can be placed at the bottom of the screen to avoid short circuit caused by metal parts on the screen board contacting with other metal substances)



- 5、Plug in power cord and power on, wait the screen update the firmware automatically, wait about 1 minutes, and when "END" appears on the top right

corner means the firmware update finished. At this time, power off the printer, unplug the SD card and install the screen again.



IF "End" is prompted at the end of the first line, while the numbers of below are all 000, which means the updating is failed, needing to format the SD card and re-operate screen firmware update steps.



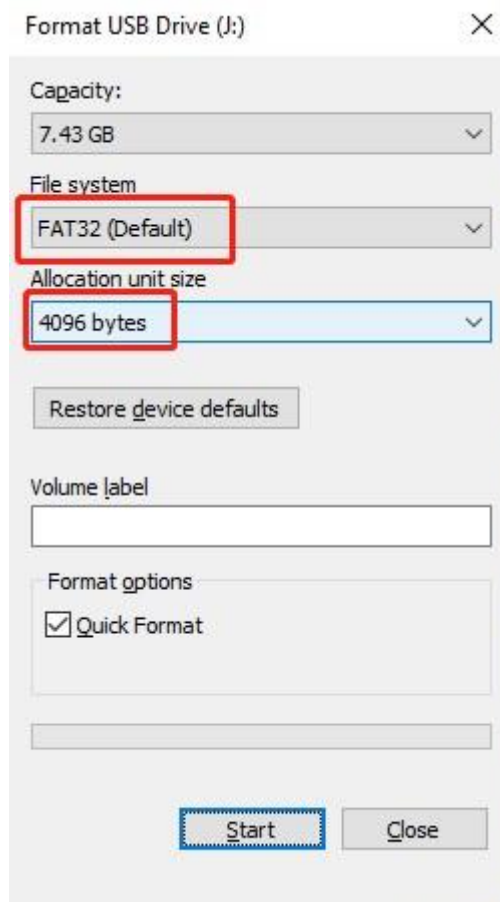
Figure Display status of failed firmware update on the display

If Screen firmware update fail, please format the SD card as below:

- 1、Right click the U disk.
- 2、Format windows pop up.

Select FAT32 under system file and and 4096 bytes under allocation unit size, as figure shown below:

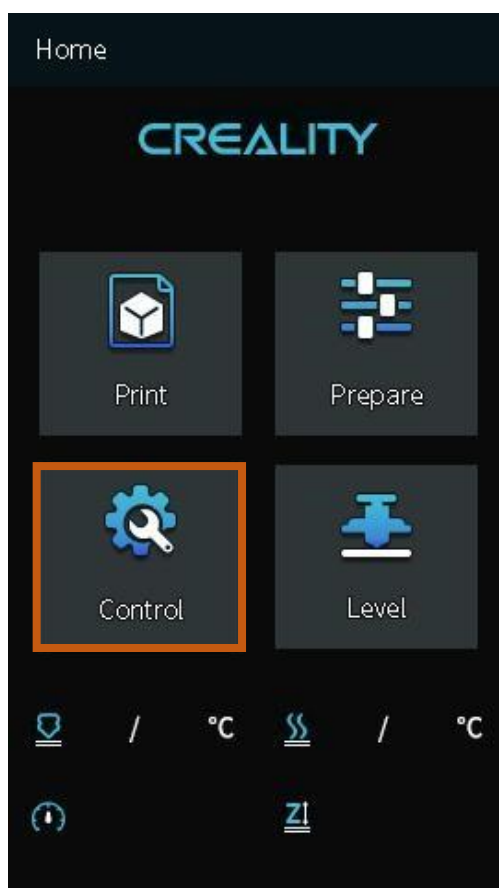
- 3、



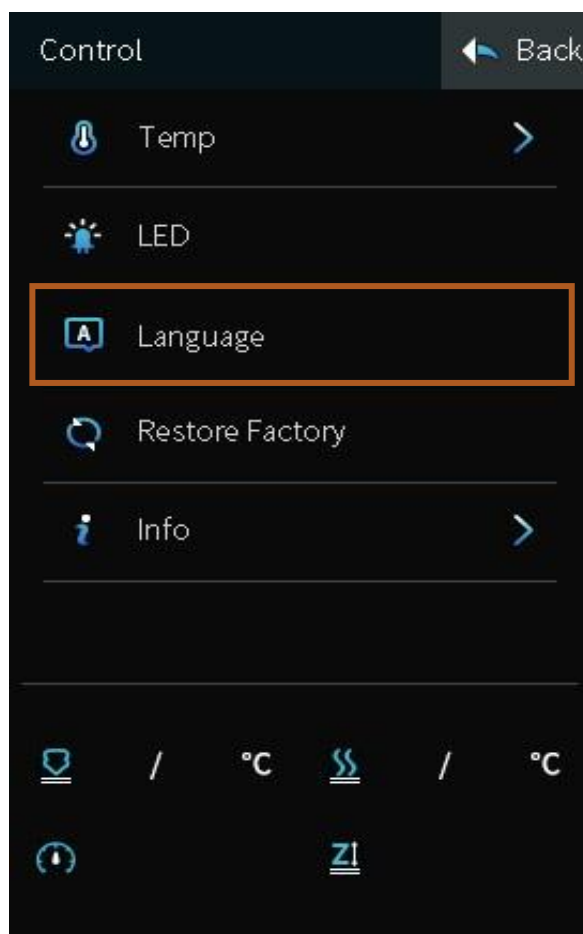
Repeat the steps to refresh the screen firmware

## Language Switch

After entering the system normally, click "Control" on the home page



Click "language" on the control page.





Select the user language on the language selection page.

